

PMX™

PROMAXIMA

www.PMXSTRENGTH.com



MEDICAL CATALOG

STRENGTH FROM WITHIN.

\$1.00

AMERICAN MADE 

FW-3211 HALF RACK	1
P-5500 DUAL LEG EXTENSION/LEG CURL	2
P-5650 HORIZONTAL LEG PRESS	3
P-104 CABLE COLUMN	4
P-143 MULTI-HIP W/ROM	5
CH-1 DELUXE UNIT	6
CH-2 DELUXE UNIT : NO WEIGHT STACK	7
CH-SL STRETCHER LIFT	8
CH-4 PLOW SLED	9
CH-3 WALL MOUNTED SHELVES UNIT	10
CM-338 STAND ALONE ADJUSTABLE CABLE COLUMN	11
CM-325 MULTI-FUNCTIONAL TRAINER	12
CM-335 MULTI-FUNCTIONAL TRAINER	13
CV-E22 SMART ELLIPTICAL	14
CV-GE5 COMMERCIAL ELLIPTICAL	15
CV-GT5 COMMERCIAL TREADMILL	16
CV-T22 SMART TREADMILL	17
CV-R22 SMART RECUMBENT BIKE	18
FW-150 ADJUSTABLE WORKBENCH W/ WHEELS	19
DUMBBELLS HEX RUBBER	20
KETTLEBELL RUBBER	21
POWERBLOCK PRO DUMBBELLS	21
WEIGHT PLATES	22
LIFT BOXES	23
FW-13 OLYMPIC PLATE HOLDER	23
2000 LB BLACK OLYMPIC BAR	23
RESISTANCE STRETCH BAND ROLLS	24
COLOR CHART : UPHOLSTERY	25
COLOR CHART : POWDER COAT	25

FW-3211 HALF RACK



FEATURES

- 3" X 2" universal upright
- 11 Gauge steel
- 3 Way urethane chinup
- (2) Bar hooks
- (2) Safety arms
- (2) Bar storage
- (4) Universal band pegs
- (10) Weight peg storage
- Custom powder coat

P-5500 DUAL LEG EXTENSION/LEG CURL



FEATURES

- 2" x 4" 11 guage steel weight stack frame housing
- Form fitted outer weight stack shield
- ABS seat & back protective dishes
- Seamless upholstery
- Lower limb adjustment with numerical indexing, 1-5
- Start range locator with numerical indexing, 1-6
- Six position seat back adjustment
- Bright red colored pull knobs
- All axis of rotation have RED, permanent indication
- Instructional color placard
- 225 lb. weight stack
- 1/4" nylon coated aircraft cable driven 4800 lb test
- All pivoting axis have radial bearings
- True strength curve on cam

P-5650 HORIZONTAL LEG PRESS



FEATURES

- 2"x 3" Heavy wall steel construction
- 40 oz. Seamless upholstery, bacteria free
- Seat carriage glides on stainless guide rods and linear bearings
- Heavily padded shoulder pads
- Assist handles with custom rubber grips
- Large non-slip foot platform
- Instructional color placard
- Durable powdercoat finish
- With Weight Shroud

P-104 CABLE COLUMN



FEATURES

- 2" x 3" 11 gauge steel weight stack frame housing
- Adjustable cable column
- Hi Lat pull
- Assist handles with custom rubber grips
- Bright red colored pull knobs
- Instructional color placard
- 150 lb. weight stack
- 1/4" nylon coated aircraft cable driven 4800 lb test
- All pivoting axis have radial bearings

P-143 MULTI-HIP W/ROM



FEATURES

- 2" x 3" Heavy wall steel construction
- 40 oz. Seamless upholstery, bacteria free
- Heavily padded rollers for comfort during exercise
- Assist handles with custom rubber grips
- Large non-slip foot platform
- Instructional color placard
- Bright red colored pull knobs
- Durable powdercoat finish

CH-1 DELUXE UNIT



FEATURES

- Stairs with medical handrails
- Pin Select
- Lifting Shelves
- Resistance Band Rails
- Climbing Ladder
- Single Adjustable Weight Stack with Dual Pulleys
- Screw Knobs

Included with deluxe



TrakHandle Sport
Cable Handle



Revolving Straight
Bar Attachment

CH-2 DELUXE UNIT : NO WEIGHT STACK



FEATURES

- Stairs with medical handrails
- Pin Select
- Lifting Shelves
- Resistance Band Rails
- Climbing Ladder
- Screw Knobs

CH-SL STRETCHER LIFT



FEATURES

- Stretcher Lift, 2 handle weighted lift

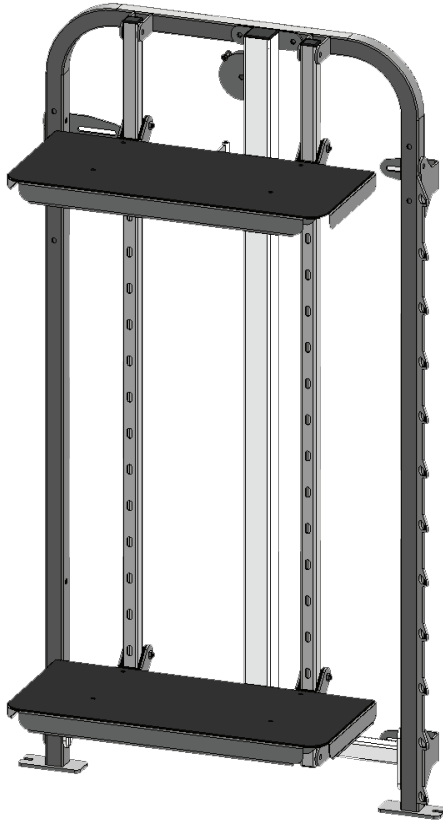
CH-4 PLOW SLED



FEATURES

- Push/Pull Sled
- 600 pound weight capacity
- Adjustable handle height
- Uses Standard Plates
- Weight: 40 lbs
- Stainless steel construction
- CH-9-FP for the felt floor pad kit (optional)
- For tile, wood, or other hard surface flooring

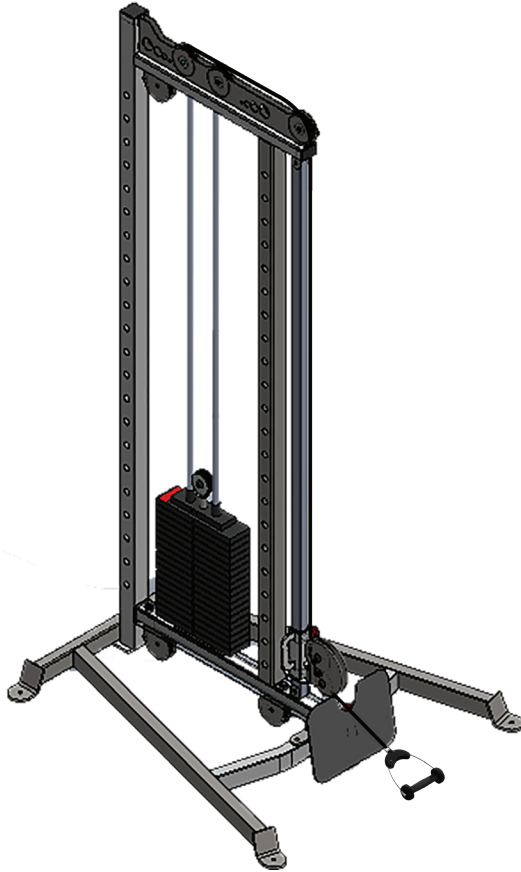
CH-3 WALL MOUNTED SHELVES UNIT



FEATURES

- Wall Mounted
- Lifting Shelves
- Resistance Band Rail

CM-338 STAND ALONE ADJUSTABLE CABLE COLUMN



FEATURES

- 225 lb Weight stack with a 2:1 Ratio
- Adjustable Lower Foot Plate
- 2" x 3" 11 Gauge Steel Frame
- Bolt Down Tabs. (Unit Must Be Bolted to the Ground)
- Track Sport Handle Included With Three Axis Rotation that Allows for Natural Movements
- Also Includes a Low-Row Handle and a Tricep Rope.

CM-325 MULTI-FUNCTIONAL TRAINER



FEATURES

- 2" x 2" & 2" x 4" Heavy wall steel frame.
- 2 - 225 lb solid steel weight stacks.
- Dual adjustable pulley system with 2 enclosed weight stacks.
- Multiple people can work out at the same time.
- Multiple adjustments allow for a wide variety of exercises.
- Total body workout.
- Over 40 exercises.
- Bright red colored pull knobs.
- Instructional color placard.
- 1/4" nylon coated aircraft cable driven.
- Powder coat finish.
- Optional Medical Weight Stacks Are Available.

CM-335 MULTI-FUNCTIONAL TRAINER



FEATURES

- Dual adjustable pulley system with 2 enclosed solid steel weight stacks are 225 lbs each.
- 11 different pulley adjustments on each column.
- Multiple people can work out at the same time.
- Total body workout.
- Over 40 exercises.
- 2" x 2" & 2" x 4" Heavy wall steel frame.
- Instructional color placard.
- 1/4" nylon coated aircraft cable.
- All pivoting axis have radial bearings.
- Powder coat finish.
- Accessory storage pegs.
- 2 storage shelves for attachments, kettle bells, medicine balls or dumbbells.
- Includes 2 rotating Trak Handles and 1 dual hook multi use straight bar.
- Multi Grip Chin Up Handles.
- Optional Medical Weight Stacks Are Available.

CV-E22 SMART ELLIPTICAL



FEATURES

- Adjustable Fingertip Controls
- 40 Resistance Levels
- Adjustable Stride/Incline 1-10
- Large Step-up Plate
- Heart Rate Sensors
- Ability To Receive Digital Heart Rate Chest Strap And Heart Rate Monitor
- Powder Coated Steel Frame
- Non-skid Foot Pedals
- Urethane Grips
- Upper/Lower Body Workout
- Headphone Jack
- 400 lbs max user weight
- Self powered with optional 110 V Power for adjustable stride

CV-GE5 COMMERCIAL ELLIPTICAL



FEATURES

- Large 10 x 21 DOT Matrix LED Display
- Display Readout: Time, Distance, Heart Rate, Watts, RPM, Level, Speed And Calories
- Belt-driven Self Powered Hybrid Generator Drive
- 6 Preset Programs With 30 Resistance Levels
- Finger Touch Resistance Controls on Upper Arms
- Contact & Telemetric Heart Rate System
- 24" Natural Stride
- 8 Bearing Linkage System
- 22lb. Fly Wheel
- 6.75" Step Up
- Large Non-Skid Foot Plate
- 450lb. User Weight
- USB Charging Station
- Water Bottle and Phone Holder
- CSAFE Power Port

CV-GT5 COMMERCIAL TREADMILL



FEATURES

- Speed range from 0.2 – 13.2 MPH
- Incline from 0 – 15%
- 4.2hp AC brushless motor
- Over 20 programs
- Contact heart-rate receivers
- Personal adjustable fan
- 500lb. max user weight
- 60" x 22" running surface
- 1" reversible phenolic deck
- Premium 4-ply orthopedic running belt
- Smooth deck absorbent system
- 3" belt rollers
- 6.75" step on height
- Durable powder coated frame
- USB charging port
- Transport wheels for ease of transport
- Dedicated 110V/20 amp circuit required

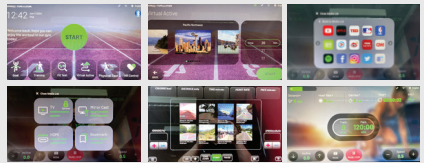
CV-T22 SMART TREADMILL



FEATURES

- Motor: 5.5 HP Continuous Duty AC Motor
- Speed Range: 0.5 to 15.6 mph
- Elevation: 0%-20%
- Running Surface: 22" x 63"
- Step-up Height: 10"
- Rollers: 4"
- Steel Frame
- Non-skid Aluminum Side Rails
- Urethane Grips
- 500 lbs max user weight
- 20-Amp Dedicated & Separated Circuit From Breaker Box required
- Dedicated 120V/20amp circuit required
- Nema 3 Prong Plug

LED and Entertainment Consoles



Entertainment Consoles Include:

- Wifi enabled aps: Youtube, Netflix, Facebook, News, Sports, Amazon, Spotify & More!
- Google Internet Search Engine
- 14 Languages
- Virtual Reality Courses
- TV Option
- 19" HD Touchscreen

CV-R22 SMART RECUMBENT BIKE



FEATURES

- Walk-thru Frame
- Angled Back Pad with Lumbar Support
- 20 Seat Positions for Proper Alignment
- Seat Adjusts on Rust Resistant Aluminum Guide System
- Non-skid Large Foot Pedals with Foot Straps
- Adjustable Fingertip Controls
- Heart Rate Sensors
- Ability To Receive Digital Heart Rate Monitoring Stats Via Heart Rate Chest Strap And Heart Rate Monitor
- Powder Coated Steel Frame
- Urethane Grips
- Self Powered with Optional 110 Volt Power Requirement
- iPhone/iPod Compatibility
- Headphone Jack
- USB Port
- Dual Setting Fan With Adjustable Vent
- Accessory Tray
- Cup Holder
- Book Rack
- Maximum User Weight: 400lbs

FW-150 ADJUSTABLE WORKBENCH W/ WHEELS



Adjustable from 0-90°



Bench stands upright
for better storage

FEATURES

- 2" x 2" & 2" x 3" 11 Gauge steel construction.
- Welded solid.
- Adjustable from 0 – 90 degrees.
- 40 oz. Seamless upholstery, bacteria free.
- Assist handles with custom rubber grips.
- Wheels for easy maneuverability.
- Stand up vertically for storage.
- Durable powder coat finish.

DUMBBELLS HEX RUBBER



CH-50
1 lbs. Dumbbell



CH-51
2 lbs. Dumbbell



CH-52
3 lbs. Dumbbell



CH-53
4 lbs. Dumbbell



CH-54
5 lbs. Dumbbell



CH-55
6 lbs. Dumbbell



CH-56
7 lbs. Dumbbell



CH-57
8 lbs. Dumbbell



CH-58
9 lbs. Dumbbell



CH-59
10 lbs. Dumbbell



CH-61
12 lbs. Dumbbell



CH-64
15 lbs. Dumbbell

KETTLEBELL RUBBER



KETTLE BPRO 005
5 lbs. Kettlebell



KETTLE BPRO 010
10 lbs. Kettlebell



KETTLE BPRO 015
15 lbs. Kettlebell



KETTLE BPRO 020
20 lbs. Kettlebell



KETTLE BPRO 025
25 lbs. Kettlebell



KETTLE BPRO 030
30 lbs. Kettlebell

POWERBLOCK PRO DUMBBELLS



FEATURES

- Urethane coated steel construction
- Increased weight range for up to 100 lbs per hand
- Patented magnetic selector pin for quick and easy weight adjustments
- Larger stainless steel knurled grip provides excellent control
- New weight plate offers improved balance
- Custom decals available

WEIGHT PLATES

Weight Plate A:
CH-80



2.5 lbs. Standard Plates With
1 Inch Holes

Weight Plate B:
CH-81



5 lbs. Standard Plates With
1 Inch Holes

Weight Plate C:
CH-82



10 lbs. Standard Plates With
1 Inch Holes

Weight Plate D:
CH-83



25 lbs. Standard Plates With
1 Inch Holes

Add On Weight Plate A:
ST-2LB



2 lbs. Standard Cast
Add On Weight Plate

Add On Weight Plate B:
ST-5LB



5 lbs. Standard Cast
Add On Weight Plate



EZR Grip Olympic
Plates with 2 inch holes

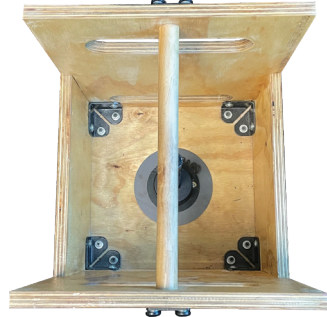
LIFT BOXES

Large Lift Box : CH-6



No Lid.
200 pound capacity
use only Standard Plates

Large Lift Box : CH-8



No Lid.
75 pound capacity
use only Standard Plates

FW-13 OLYMPIC PLATE HOLDER



Standard Plate Holder
1" Plate Holder
CH-5

2000 LB BLACK OLYMPIC BAR

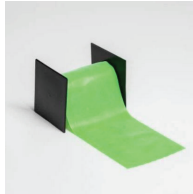


Texas Power Bar: 2000lb Test, Black
Coating, 28mm Diameter

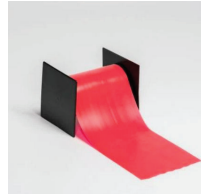
RESISTANCE STRETCH BAND ROLLS



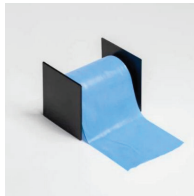
AC-TBAND
X-Light : Yellow



AC-TBAND
Light : Kiwi Green



AC-TBAND
Medium : Peach



AC-TBAND
Heavy : Blue



AC-TBAND
X-Heavy : Black/Dark Berry

COLOR CHART

Upholstery Colors



*Upholstery Colors Are All Standard
* Colors May Vary*

Powder Coat Colors



*Powder Coat Gloss Finish
* Colors May Vary*



FOR ADDITIONAL INFORMATION:

Contact us at sales@promaxima.com or
call 713-667-9606 to speak to a representative now.

www.pmxstrength.com

5310 Ashbrook Dr.
Houston, Texas 77081